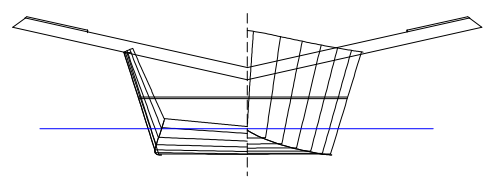


LOA 4.2m (14ft)  
Overall Beam 1.9m (6ft2in)  
Hull Beam .96m (3ft6in)  
Empty Hull Weight 50kgs (110lbs)  
Sail Area 9.2sqm (100sqft)  
optional smaller rig 8.2sqm (88sqft)  
Draft 0.1m - 1.05m (4in - 3ft6in)  
Crew capacity 1



Unfaired provisional lines plan

**14ft singlehanded race dinghy**  
**ZEST**  
**Study Plan**  
**Copyright WOODS DESIGNS 2014**  
**[www.sailingcatamarans.com](http://www.sailingcatamarans.com)**