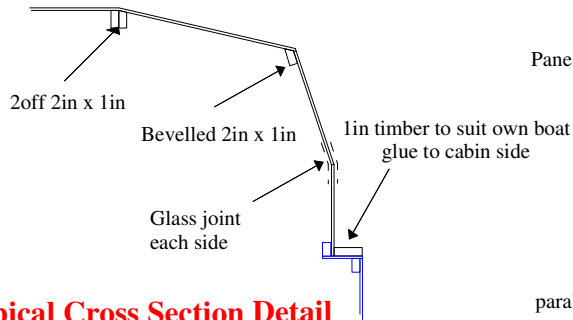
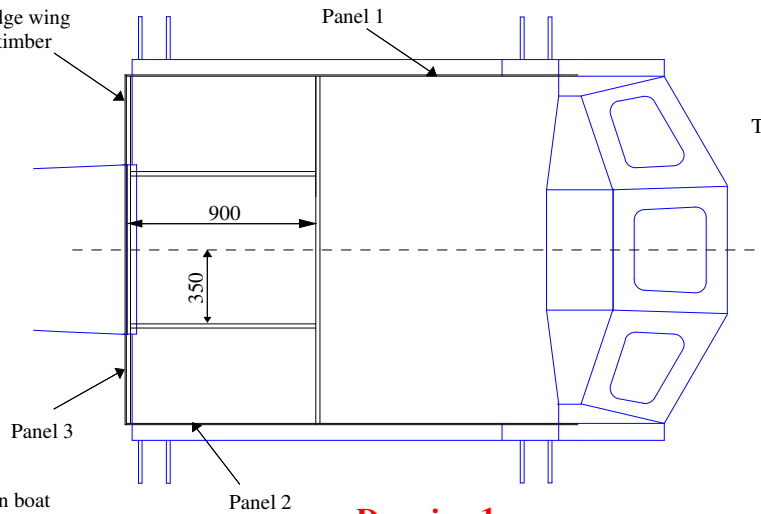


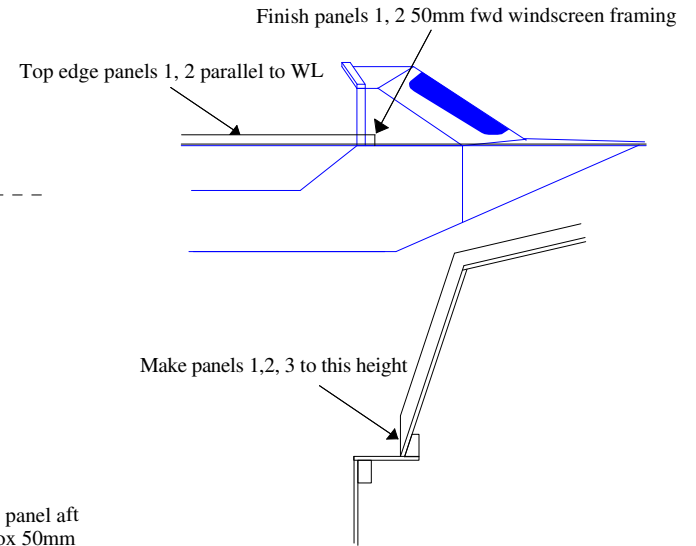
**Typical Aft Deck Detail**



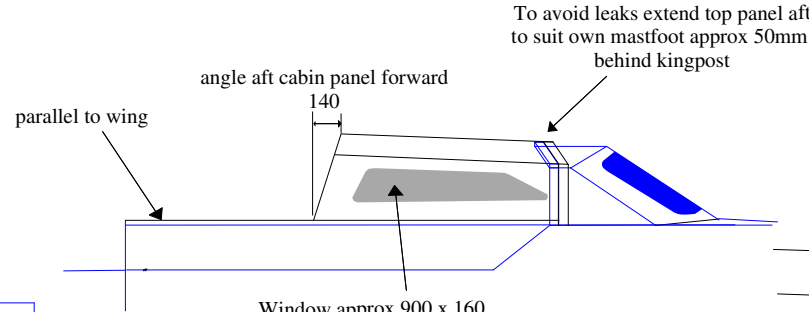
**Typical Cross Section Detail**



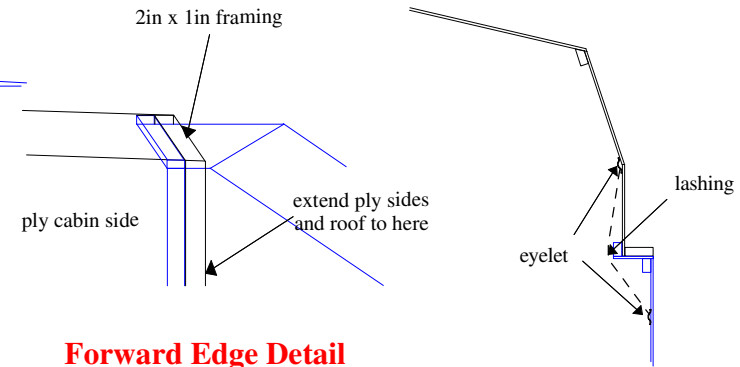
**Drawing 1**



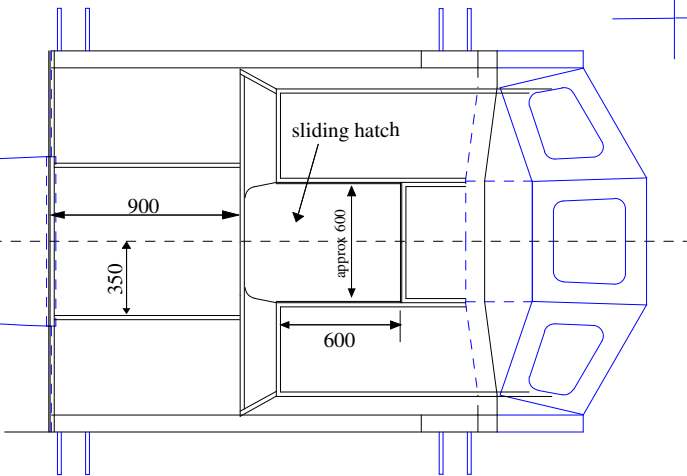
**Windscreen Joint Detail**



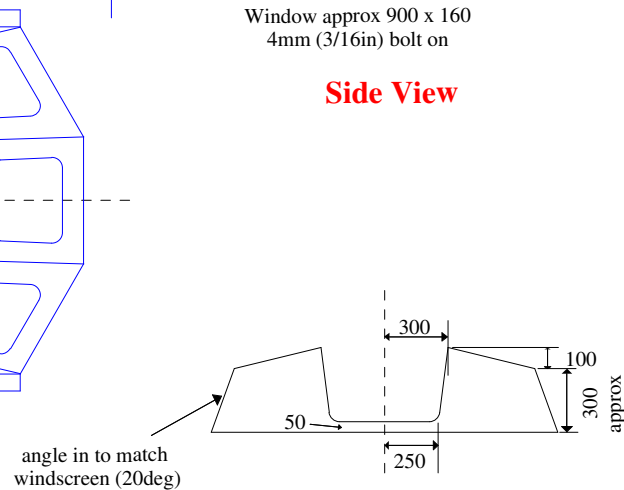
**Side View**



**Forward Edge Detail**



**Top View**



**Aft Cabin End Panel Dimensions**

Basic Procedure (see drawing 1):  
 Make vertical panels 1, 2, 3 so that top edge is parallel to WL and lines up with top of tapered framing as shown in detail  
 Fwd edge panels 1, 2 should be 50mm in front of windscreen framing to allow for cuddy framing  
 Use timber framing as required  
 (Note: Panels should overhang aft end of cockpit and aft deck top timber to prevent leaks.  
 Glue fill-in timbers as required to fwd bottom side panel 3 later)  
 Fit aft deckframing and ply deck before fitting cabin sides and then roof framing and roof panels

**NOTE:** All dimensions and details are approx,  
 make cuddy to match own cockpit and windscreen  
 Blue lines indicate existing structure  
 All plywood 6mm, all framing 2in x 1in  
 Lash cabin top down as required (min 2 a side), see sketch  
 or use 6mm through bolts  
 Aft deck can be lowered if desired to make access into cabin and crossing the boat when tacking easier