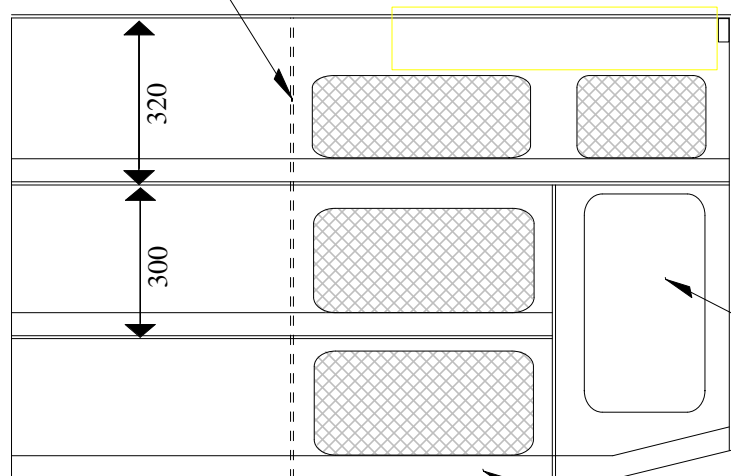


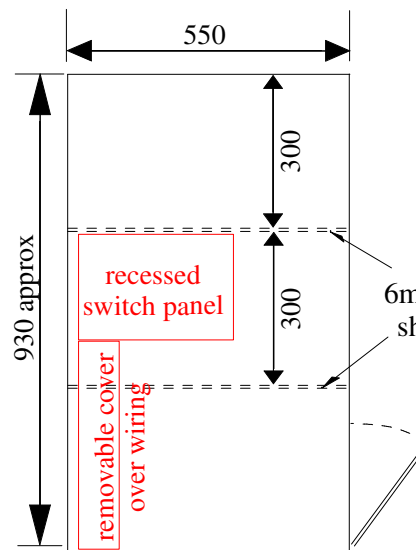
**aft galley worktop front
looking fwd from aft bhd**

2in x 1in

aft galley worktop front

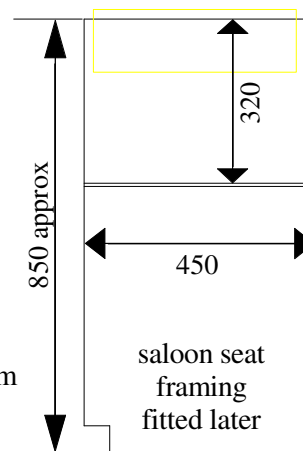


**side galley worktop front looking to port
showing locker cutouts**

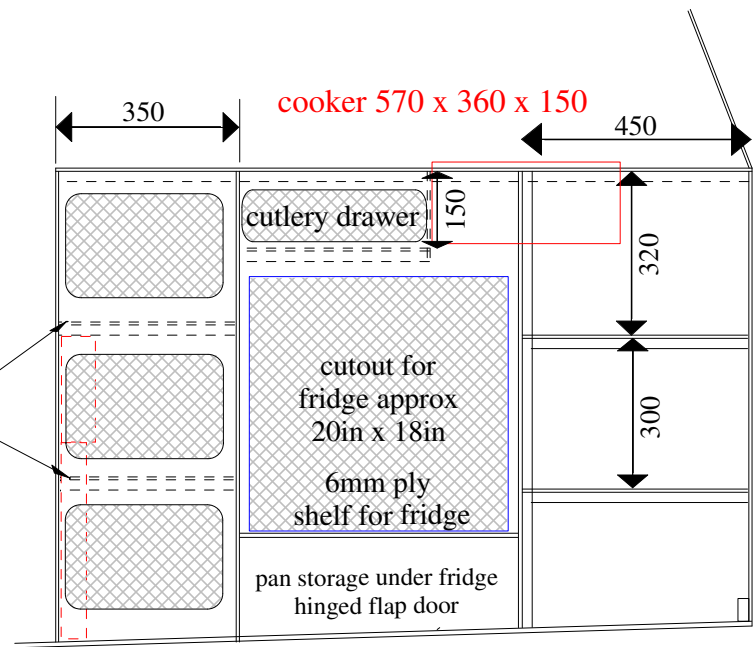


aft worktop end panel

recessed electric panel (Red)
to suit own boat
approx 2in deep 300 x 200



**side galley worktop
end panel**



**aft galley worktop front looking aft
showing locker cutouts**

double up round cutouts with scrap ply on inner side

Details approx Make to suit own boat,
fridge, stove and sink not all framing shown
Leave worktops 10mm short of outer edge
to allow for window panel ply thickness

Skoota 26/28

15 Galley Panels

Copyright WOODS DESIGNS
Jan 2012