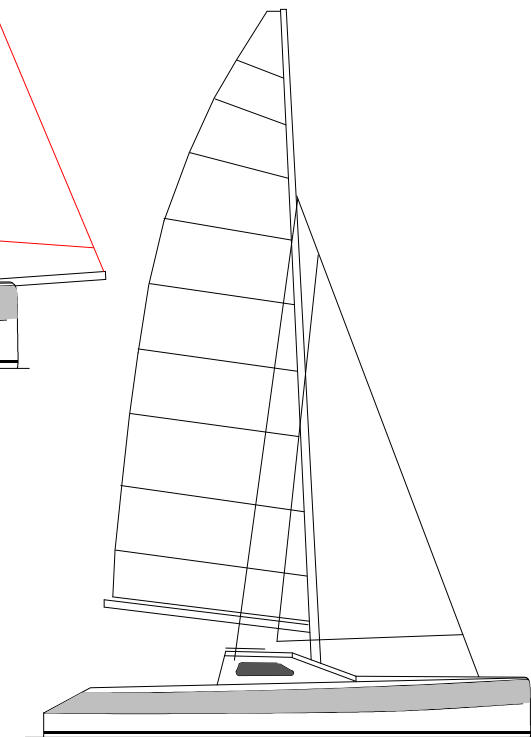
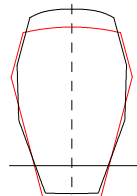
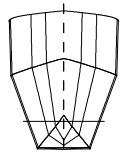
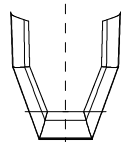
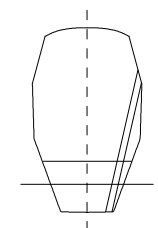


**Acorn with modified Tornado rig (bigger jib fitted)**



**Acorn with modified Hobie 18 rig (mainsail luff is reduced to allow boom to be raised)**

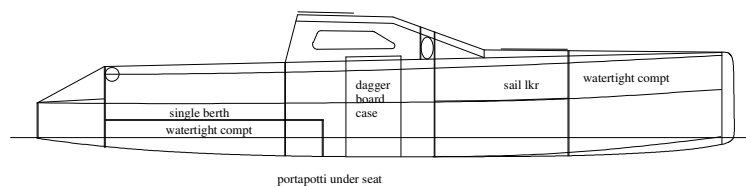


**Hull Cross Section in Cabin**

**Partial Hull Cross Sections (aft on left, fwd on right)**

**Hull Cross Section Comparison with Janus (in red)**

Note: For Clarity cross-sections are at a different scale from other drawings



portapotti under seat

**Hull materials:**  
 4mm ply hull sides approx 12 sheets  
 6mm ply bulkheads, hull bottoms and decks approx 13 sheets  
 Sheathing 200g glass and epoxy  
 Chine joints are timber or glass tape/epoxy  
 Approx 25kg epoxy min

**21ft Acorn**  
 simple, trailable, minimalist, performance cruising catamaran  
 Large beach cat rig (plus foils, deck gear etc)  
 can be used instead of (racing) rig shown here.  
 Cruising rig also available

LOA 6.4m  
 LWL 6.35m  
 BOA 3.8m  
 Racing Sail Area (as shown)  
 Mainsail 19.6sqm  
 Jib 9sqm (screecher in red optional)  
 Empty weight 400kgs  
 Displacement to WL 720kgs  
 Draft 190, (1000 boards down)  
 2 single berths in hulls plus boom tent  
 headroom 1.3m

**Acorn**  
 Study Plan  
 Copyright WOODS DESIGNS  
 August 2010